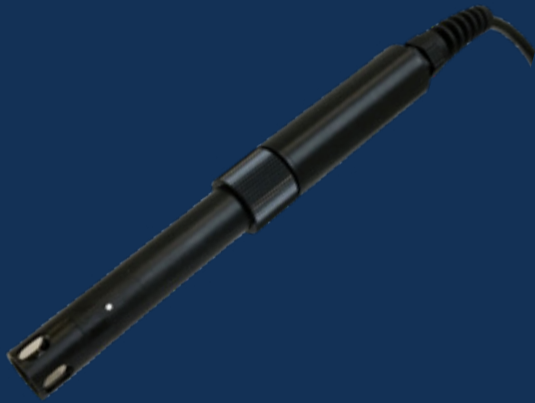


pH/ORP PROBE SENSOR

WATER QUALITY
MONITORING
SOLUTIONS



FEATURES & BENEFITS

- Combined electrode technology
- Measures pH, ORP and temperature
- Operator friendly, low maintenance design
- Range for wastewater to high purity applications
- Robust and compact design
- Innovative reference increases lifetime

OVERVIEW

Real Tech's pH/ORP sensor provides rapid real-time measurement of pH, ORP (redox) and temperature in water and wastewater. The combination sensor has been designed with a range to perform under harsh wastewater, seawater or high purity water conditions. The sensor features a long life reference with an innovative technology that increases the lifetime of the probe and decreases the frequency of cartridge refill. Ideal for many applications, the sensor features a quick response time, minimal flow dependence and low power consumption.

MODELS

MODEL	NAME	pH RANGE	ORP RANGE
PHORP100	Real pH/ORP Probe Sensor	0-14	-1000-1000 mV

Includes sensor, 50 ft communication cable, and manifold (unless purchased with pole mounting kit). Controller and automatic cleaning system sold separately.

MUNICIPAL DRINKING WATER
MUNICIPAL WASTEWATER
INDUSTRIAL PROCESS WATER
INDUSTRIAL WASTEWATER



REALTECH
INC.

SPECIFICATIONS

CHARACTERISTIC	TECHNICAL DATA
Model #	PH1000
Measurement Principle pH	Combined electrode (pH/ref): special glass, Ag/AgCl ref. Gelled electrolyte (KCl)
Measurement Range	0 – 14 pH
Resolution	0.01 pH
Accuracy	+/- 0.1 pH
Measurement Principle ORP	Combined electrode (Redox/ref): Platinum tip, Ag/AgCl. Gelled electrolyte (KCl)
Measurement Ranges	-1000 to 1000 mV
Resolution	0.1 mV
Accuracy	+/- 2 mV
Temperature Compensation	NTC thermistor
Dimensions	Diameter: 27 mm, Length (not including cable): 207 mm
Materials	PVC, DELRIN, special pH glass, platinum, polyamide
Maximum Pressure	70 PSI
Electrical/Communication	From controller
Storage Temp.	0°C to 60°C (32 to 140°F)
Weight	1 lb
Warranty	2-year limited

* Technical Specifications are subject to change without notice.

Real Tech Inc.

1150 Champlain Court,
Whitby, Ontario L1N 6K9 Canada
TF: 1.877.779.2888 T: 1.905.665.6888
info@realtechwater.com



(주)엠씨마스터스

MC Masters
Measurement & Control

REALTECH
INC.